



impro technologies®
ACCESS CONTROL

IXP20 SYSTEM

IXP20 Touch | IXP20 NET

IXP20 TOUCH | IXP20 NET

Access Control at your Fingertips

PRODUCT CODES: ISC921-0-0-GB [iTRT with TFT Touch Screen]
ISC911-0-0-GB [iTT with TFT Touch Screen]
ISC920-0-0-GB [iTRT without TFT Screen]
ISC910-0-0-GB [iTT without TFT Screen]

The IXP20 range consists of two products and meets the requirements of one to eight door applications, incorporating full stand alone and independent functionality.

KEY FEATURES:

- AES 128 bit encryption and Diffie Hellman Key-Exchange.
- 2 Models:
 - Touch – One to eight door system with full colour graphics Touch Screen.
 - Net – One to eight door system with TCP/IP for internet communication or direct to PC.
- Onboard web application with no need for software.
- Built on standard iTRT (Wiegand compatible) or iTT (Antenna) base.
- Complete upgrade path into IXP220 and IXP400i systems by simply adding a system controller and downgrading the IXP20 Controller to a door controller.



Specifications:

- 1 000 Tagholders
- 5 000 buffered transactions
- 1 to 8 Doors
- Up to 16 Readers (8 APB Doors)
- Up to 3 Tags per person
- Up to 8 Tagholder Access Groups
- Up to 3 Door Mode Patterns per door
- TCP/IP network is standard



Compatible with |





Touch screen for system configuration & reporting



Tag Reader Coil mounted behind the screen



Quik Click Gland and Ethernet connection



Easy-to-mount backing plate

- All systems support:
 - Full standalone/independent capability.
 - 10 to 30 V DC input power.
 - Each door provides Door Open Sensor and Request To Exit inputs.
 - Fully intelligent, specific Tag editing.
 - Multiple door mode patterns.
 - Onboard reporting.

Be it the home or office, the IXP20 with its modern and sleek design, will compliment the aesthetic appeal of any building. The IXP20 provides Impro's tried and tested access control technology, taking you into the future with complete peace of mind and security. The two and a half inch colour TFT touch screen offers complete system configuration including simple and advanced system configuration. With onboard reporting, the IXP20 provides a clean and easy-to-use visual output for the user, making access control setup from 1 up to 8 APB (Anti-Passback) doors uncomplicated.

The IXP20 is offered in two models, IXP20 Touch & IXP20 Net, the latter is delivered without the TFT Touch Screen at a reduced cost and relies solely on the simple-to-use web application. Both models however, feature groundbreaking security on the communications by offering class leading AES 128 bit encryption with Diffie Hellman Key-Exchange – a form of digital encryption that would make the task of a would-be code breaker almost mathematically impossible.

With the IXP20 system, access control is no longer reserved for the industrial or enterprise market. Everything you need to secure your premises is at your fingertips thanks to the simplicity of the touch screen and web application, all while reducing costs and complexities whilst maintaining utmost security and functionality.

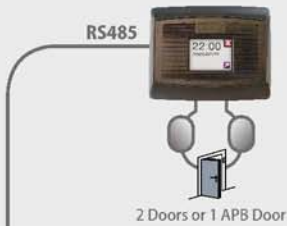
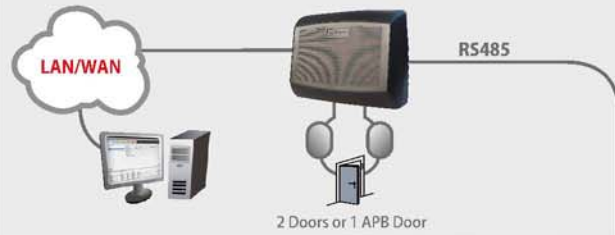
Compatible with |



IXP20

Upgrade **PATH** | **Touch** | **Web**

STANDARD

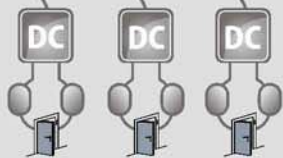
TOUCH**WEB**

EXPANDED

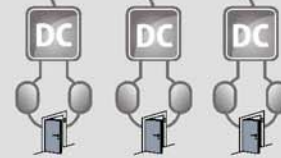
OPTIONAL WEB INTERFACE



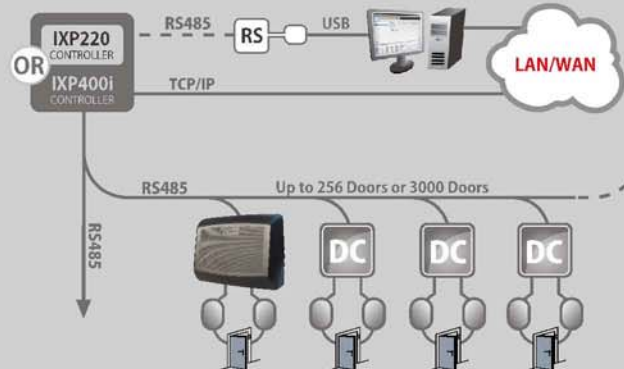
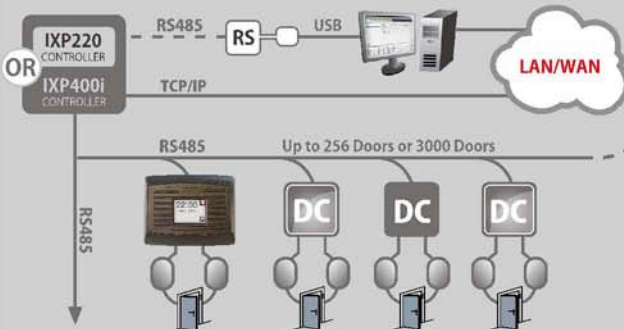
Up to 8 Doors



Up to 8 Doors

ADD an **IXP220** | **IXP400i** Controller and downgrade the **IXP20** Controller to Door Controller Firmware

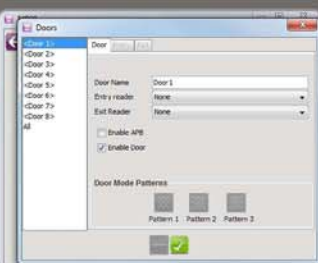
UPGRADED



SCREENSHOTS FROM EMBEDDED WEB APPLICATION



IXP20 Home Screen



DOOR CONFIGURATION



REPORTING FEATURES



TAGHOLDER CONFIGURATION

Compatible with |

